



SAP® Business One
Apparel & Footwear



Apparel

Introduction

Collaboration

In-Memory Fashion

The solution

Product Data Management

Inventory management

Sales and delivery

Web PLM

Sales Force Automation

Summary

Now fashion companies can grow from small to extra-large with SAP® Business One.

Integrate and automate critical business processes with Apparel & Footwear for SAP Business One

Every season, customers and suppliers can be difficult to predict; they shift their focus and market needs change. But you can respond just as quickly when you have all of your business information at your fingertips. The SAP® Business One application and Apparel, Footwear & Accessories vertical solution is what you need.

SAP® Certified
SAP Business One Integration

SAP® Qualified
Solution for SAP Business One



Introduction

Collaboration

In-Memory Fashion

The solution

Product Data Management

Inventory management

Sales and delivery

Web PLM

Sales Force Automation

Summary

You can easily access your company's data from one place >

In real time, with familiar tools and reports. You can see sales, operations, and financial data, wherever you are, day or night.

Discover how you can integrate and automate manufacturing >

Supply chain, sales, and financial processes, a complete view of your business.

The solution will better enable brands to manufacture their products >

And sell them to retailers and consumers using one single, vertical solution.

Apparel & Footwear for SAP® Business One
has everything a small to midsize apparel
manufacturer or importer needs.

SAP Business
One

Introduction

Collaboration

In-Memory Fashion

The solution

Product Data Management

Inventory management

Sales and delivery

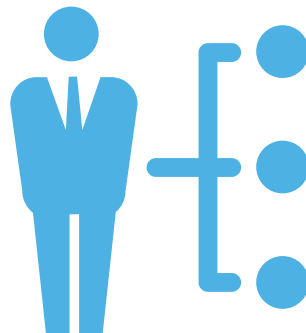
Web PLM

Sales Force Automation

Summary

Collaboration

The collaboration aims to enable retailers to meet any challenge and to manage the vertical, multi-channel business processes across one system landscape for greater efficiency, quicker time to market and better inventory control, so retailers can grow globally.



Introduction

Collaboration

In-Memory Fashion

The solution

Product Data Management

Inventory management

Sales and delivery

Web PLM

Sales Force Automation

Summary

In-Memory Fashion

The solution is envisioned to give fashion companies a unified view of inventory. With the power of in-memory computing, large data volumes can be quickly analyzed for a fast and accurate overview of products, saving both time and money across operations.



Introduction

Collaboration

In-Memory Fashion

The solution

Product Data Management

Inventory management

Sales and delivery

Web PLM

Sales Force Automation

Summary

The solution

Apparel & Footwear for SAP Business One provides the most comprehensive business solutions available to help any type of clothing company better address customer needs, develop and deliver compelling products, streamline processes and inventories, and control costs across the entire supply chain.



Introduction

Collaboration

In-Memory Fashion

The solution

Product Data Management

Inventory management

Sales and delivery

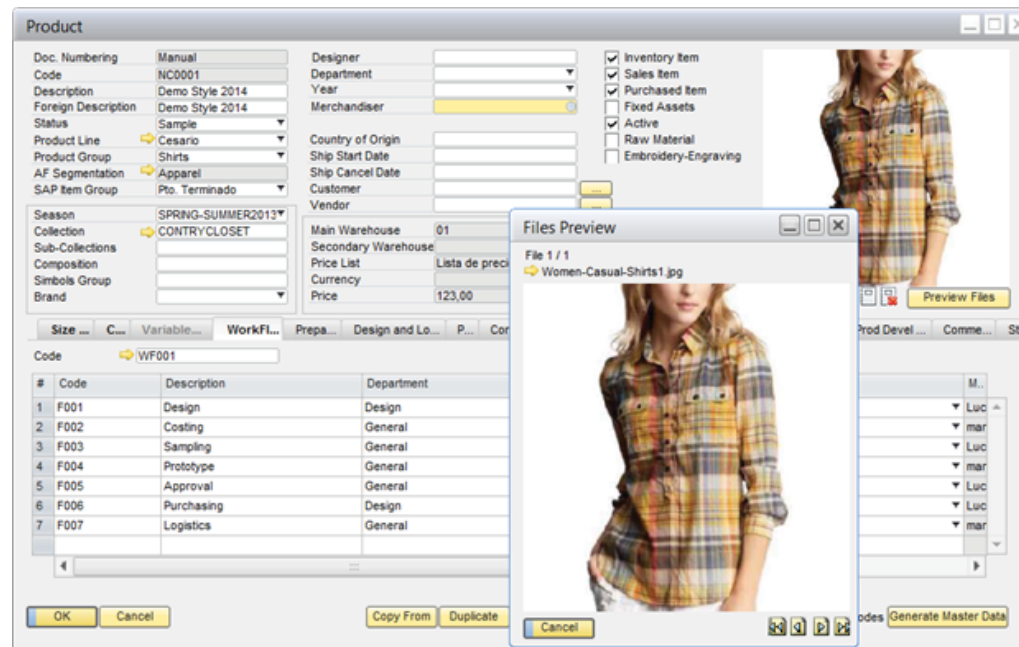
Web PLM

Sales Force Automation

Summary

Product Data Management (PDM).

Product Data Management application is for product-centric businesses that need to maintain, store, and use large amounts of product-related data across the company processes.



Manage Images, Colors, Materials, POMs. Sketches, concepts, documentation and images can be added to the style from a file or an existing drawing tool. Manage raw materials and labors for costing. Add Point of measures based on templates. Once the style cost and pricing are approved generate SKU information directly from the product data management.

Introduction

Collaboration

In-Memory Fashion

The solution

Product Data Management

Inventory management

Sales and delivery

Web PLM

Sales Force Automation

Summary

Inventory management

In textile, apparel, and footwear companies, SKU and Bill of Material complexity is a challenge that you face across your supply chain systems.

With Apparel & Footwear for SAP Business One dimensional capability, you will be able to manage your data at the end item level to successfully forecast, plan, and manufacture your product, delivering the right product and controlling your inventories.



PLAN

MANUFACTURE

DELIVERY

CONTROLLING

Introduction

Collaboration

In-Memory Fashion

The solution

Product Data Management

Inventory management

Sales and delivery

Web PLM

Sales Force Automation

Summary

Sales and delivery

Season and off-season order entry could be a painful process in fashion companies. Apparel & Footwear allows users to run from single to multi-store or prepacks orders using a flexible horizontal matrix entry.

The screenshot displays the 'Sales Order' application window. It features a top section for customer and order details, a central tabbed area with 'Apparel Content' selected, and a bottom section for employee and remarks. A 'Style Tech Pack Picture Preview' window is overlaid on the right, showing two views of a grey shirt.

Sales Order

Customer: C0001
Name: El Corte Ingles
Contact Person: [dropdown]
Customer Ref. No.: [text]
Local Currency: [dropdown]

No. Primario: 167
Status: Open
Posting Date: 16/03/14
Delivery Date: 15/03/14
Document Date: 16/03/14

Contents | **Apparel Content** | Logistics | Accounting | Attachments

Ship to	Retailercode	Style	StyleDesc	Color	ColorDesc	S	M	L	XL
Ship to	SARM	000951	Demo Style fo 100	Flesh	8	0	0	20	60
Ship to	SARM	000951	Demo Style fo 1045	9045	8	0	0	4	12
Ship to	ST	000951	Demo Style fo 100						
Ship to	ST	000951	Demo Style fo 1045						

Sales Employee: Jose Espindola
Owner: Rotondo, Lucas

Remarks: [text area]

OK Cancel Embroidery - Engr...

Style Tech Pack Picture Preview

000951 Demo Style for SAP

Two views of a grey shirt: front and back.

Introduction

Collaboration

In-Memory Fashion

The solution

Product Data Management

Inventory management

Sales and delivery

Web PLM

Sales Force Automation

Summary

Web PLM

Manage styles, colors and materials online. Generate and track requests, purchase orders, critical path activities. Print tech packs and review fitting processes. Employee, customers and vendors access the same data, in real time to complement the ERP processes.



Introduction

Collaboration

In-Memory Fashion

The solution

Product Data Management

Inventory management

Sales and delivery

Web PLM

Sales Force Automation

Summary

Sales Force Automation

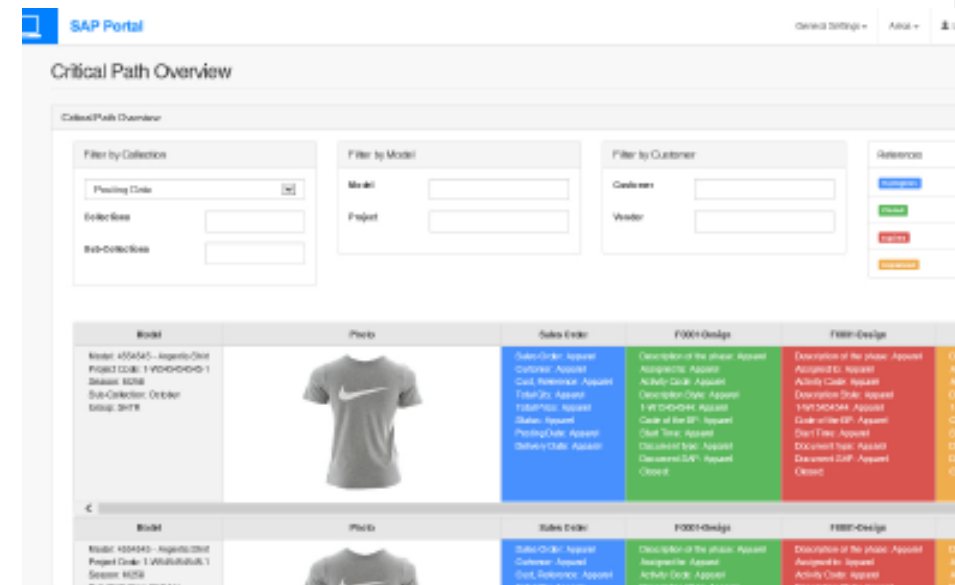
Use the Web to grow revenue and provide more services to your customers. Apparel & Footwear offers web presence for your sales employees and users. Representatives enter and track orders, shipments and invoices and access customer and style information. Allow access to season styles to your customers.

Web shop experience. Through our apparel merchant and ecommerce experience your customers can pick styles, colors, variables in a flexible web store.

Fashion Book

Fashion Book In the fashion industry the immediacy and accuracy of the Collection can make all the difference.

The fashion book presentation controlled entirely by merchandising staff at the fashion house delivers accurate collection information from the the Apparel & Footwear solution, including style and color options and inventory availability.



Introduction

Collaboration

In-Memory Fashion

The solution

Product Data Management

Inventory management

Sales and delivery

Web PLM

Sales Force Automation

Summary

The SAP® Business One & Apparel and footwear applications manage the entire business in a single system. It is affordable, easy to buy and use, and quick to install. It is made for companies like yours.

SAP Business One Apparel Footwear and Accessories

can provide you with the most comprehensive business solutions to overcome any obstacle, employing leading-edge information technology throughout your design, sourcing, and retail operations.

Product

Disc. Numbering: Manual
Code: LP0001
Description: Loke Fashion
Foreign Description:
Status:
Product Line: Accessories - ACC
Product Group: Accessories
AP Segmentation: Accessories
SAP Bus Group: Pts. Accessories
Season: Spring 2012
Collection: Spring 2012
Sub-Collections:
Composition:
Symbol Group:
Brand:

Designer: Department: Year: Merchandise:
Country of Origin:
Ship Start Date:
Ship Cancel Date:
Customer: C0001
Vendor: V0001
Main Warehouse: 01
Secondary Warehouse:
Price Unit: Retail
Currency: EUR
Price: 100.00

Inventory Item:
Sales Item:
Purchased Item:
Fixed Assets:
Active:
Raw Material:
Embroidery-Engraving:

Color Chart

#	Code	Description	Color	Active
1	190	Peach		
2	0R	Brown		

Critical Path-Execution

Model	Color	Execution
Model: LP0001 - Loke Fashion	190	Production of the design
Model: LP0001 - Loke Fashion	0R	Production of the design

Introduction

Collaboration

In-Memory Fashion

The solution

Product Data Management

Inventory management

Sales and delivery

Web PLM

Sales Force Automation

Summary

argentis



www.argentis-systems.com
